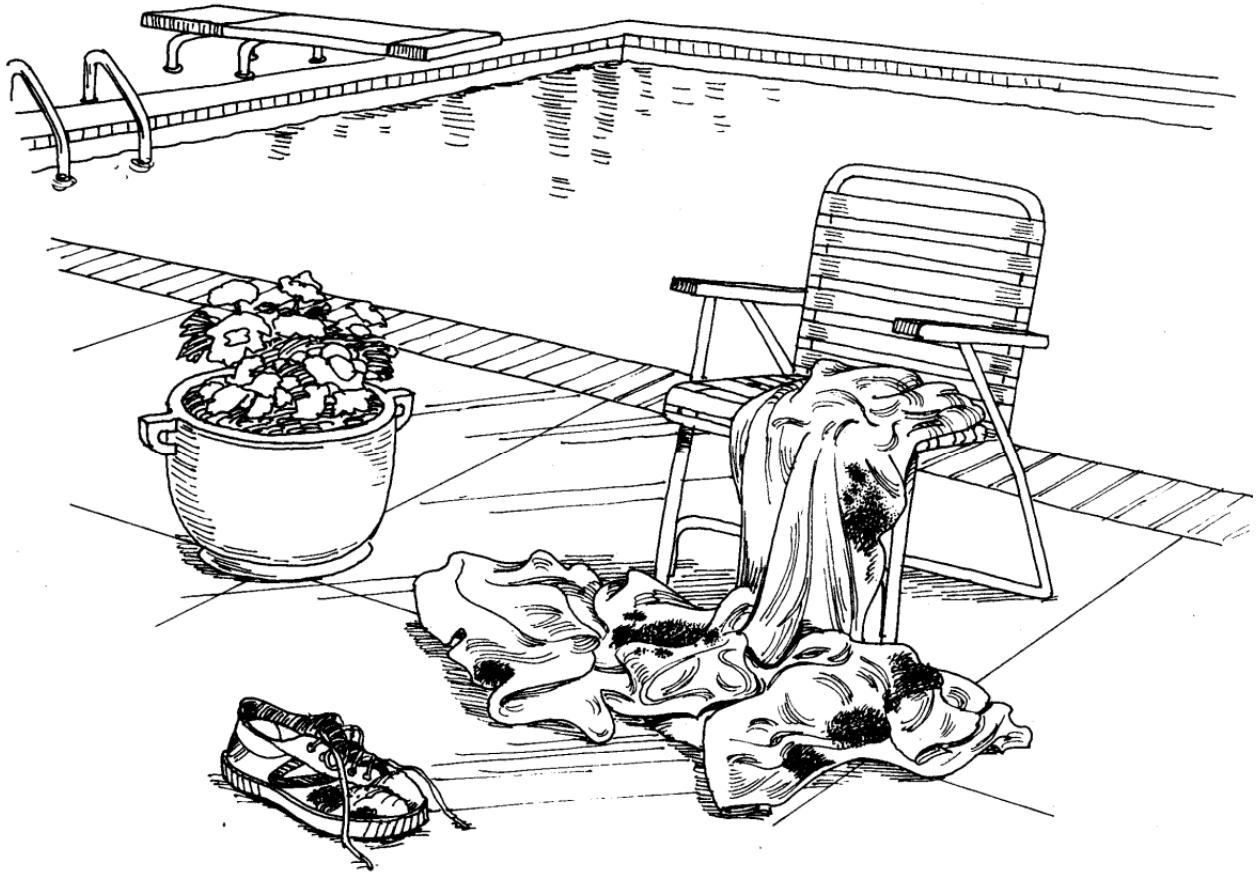


What ecological roles do Protists and Fungi play in the ecosystem?

- Protozoa are animal-like protists
- Algae are plant-like protists
- Slime molds are fungus-like protists
- Distinct structures allow fungi to grow, reproduce, & take in nutrients
- Mycorrhizae & lichens are symbiotic relationships that involve fungi
- Fungi can be both helpful and harmful to humans

Key Vocabulary	Assignments
<p>Amoeba Chitin Cilia Euglena Flagella Fungi Hyphae Lichens Multicellular Mycelium Mycorrhizae Paramecium Pellicle Protists Pseudopod Slime Mold Symbiotic Unicellular</p>	<p>#1 Read pages 326-327 A. What are algae? B. Why are green algae thought to be the ancestors of plants?</p> <p>#2 Read pages 334 to 335 A. Define Fungi. Make sure you include an explanation of the bolded words.</p> <p>#3 Optional - Define the Key Vocabulary</p>

MILDEW MAKES THINGS MUSTY



1. What kinds of objects does mildew grow on?
2. What substance is present in these objects that mildew needs to live?